

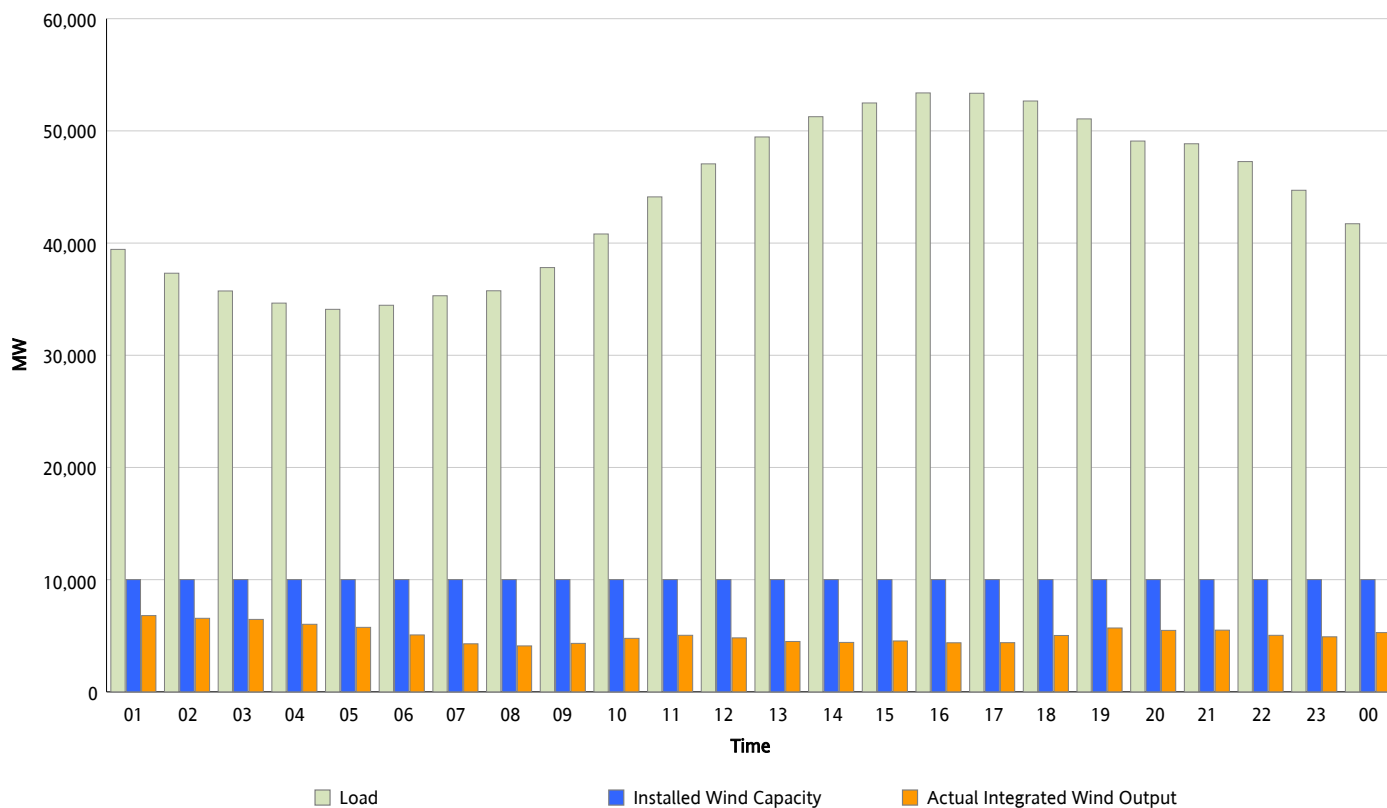


ERCOT Grid Operations

Wind Integration Report : 08/25/2012

Peak Load	53,384 MW
Load Peak Hour (HE)	16
Wind Over Peak	4,375 MW
Wind Record 06/19/12	8,368 MW
Max Wind Value*	6,959 MW
Wind Peak Time	00:09
Wind Integration %	17.22 %

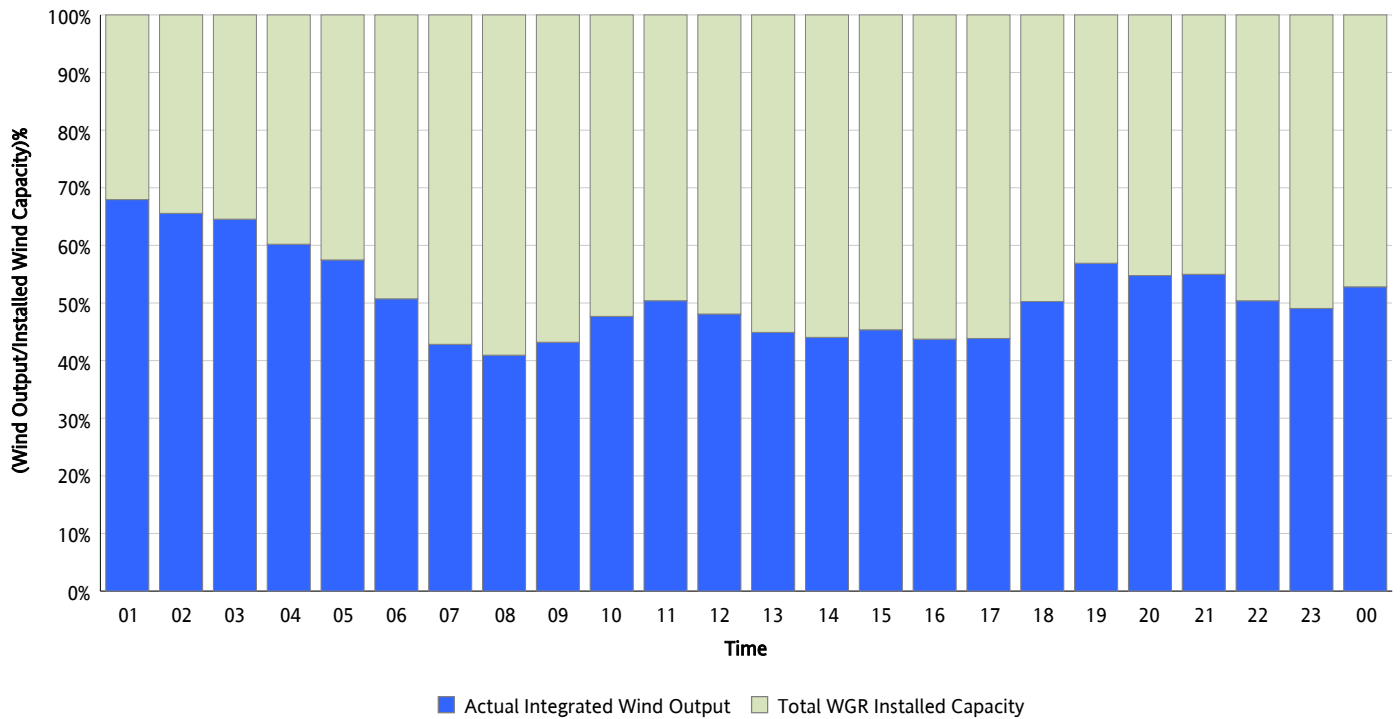
Hourly Average Actual Load vs. Actual Wind Output
08/25/2012



* Wind Record and Wind Max represent instantaneous values and the rest of the values are integrated over the hour

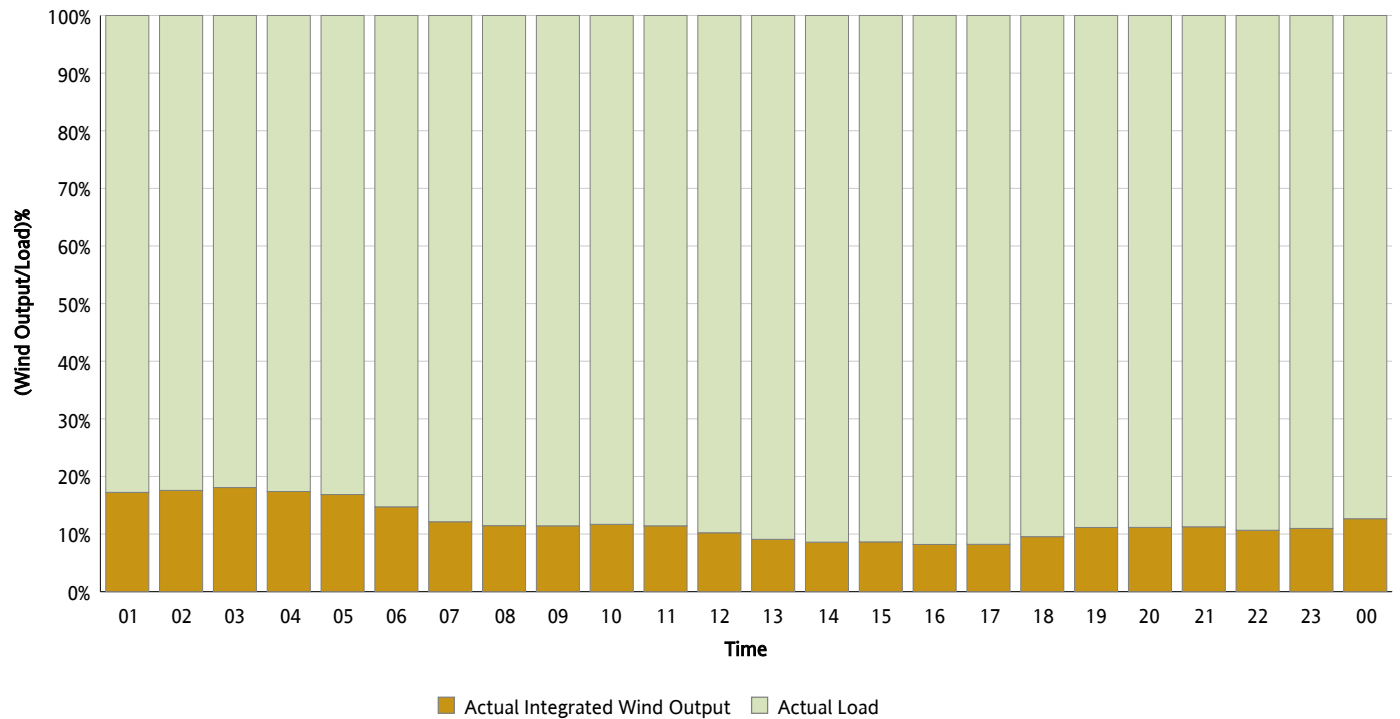
Actual Wind Output as a Percentage of the Total Installed Wind Capacity

08/25/2012



Actual Wind Output as a Percentage of the ERCOT Load

08/25/2012



ERCOT Load vs. Actual Wind Output

08/18/2012 - 08/25/2012

